



TITAN 53' 4 Axle THINWALL® Possum Belly Trailer



Specifications

Payload

Waste Management
(waste, recyclables)

Dimensions

Length	53' (16.2 m)
Width	102" (2.59 m)
Overall Height	162" (4.1 m)
Volume	4460 ft³ (165.2 yd³)
Weight (with tarp)	8,627 kg (19,019 lbs)

Running Gear

Axles/Suspensions	Primary: SAF 25/30 245 Lift/Steer: Ridewell RSS-232
ABS	2S/2M Meritor WABCO
Brake Type	Disc
Tires	Goodyear
Landing Gear	SAF Holland

Body

Side Panels	Aluminum Patented THINWALL® Horizontal Hollow-Core Extruded Panels
Flooring	Aluminum Sheet/Channel Floor
Mud flaps	Black Rubber - Front of Primary Group and at Rear of Trailer
Lights	LED - Truck Lite
Rear Door	Extreme-Overslung Hinge, Solid, Air Release & Safety Chain
Bumper	Aluminum, Narrow. 4 x 4 Solid Aluminum Bumper Blocks



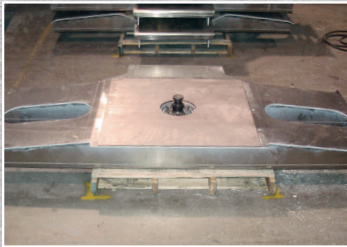


TITAN 53' 4 Axle THINWALL® Possum Belly Trailer



TAILOR YOUR TITAN

to suit your personal preference and application



Aluminum Coupler



Eclipse Front



Extreme Overslung Hinge



4x4 Solid Aluminum
Bumper Blocks



Drop Swing Bars for Top
Crossmembers



Air Vents on the sides



Safety Hook at Landing Gear

KEY FEATURES

- The patented THINWALL® panel features a horizontal tongue-in-groove joint that allows 100% machine welding inside & outside for end-to-end strength
- 100% welded, all aluminum, rivet free, unibody construction provides an industry leading strength to weight ratio

HEAD OFFICE

1129 Hwy #3, R.R. #3 • Delhi, Ontario, Canada N4B 2W6
Tel: 519-688-4826 Fax: 519-688-6453 • e-mail: info@titantrailers.com

Strength Through Innovation  www.titantrailers.com

