



Specifications

Payload	Waste Management (waste, recyclables)
----------------	--

Dimensions

Length	48' (14.63 m)
Width	102" (2.59 m)
Overall Height	162" (4.1 m)
Volume	3,954 ft ³ (146.5 yd ³)
Weight (without tarp)	6,681 kg (14,729.08 lbs)

Running Gear

Axles/Suspensions	SAF Straight Spindle
ABS	2S/2M Meritor WABCO
Brake Type	Disc
Tires	Michelin
Landing Gear	Jost Model A401G3-14-08

Body

Side Panels	Aluminum patented THINWALL® horizontal hollow-core extruded panels
Flooring	Aluminum Sheet/Channel Floor
Mud flaps	Black Rubber - Front of Primary Group & at Rear
Lights	LED - Truck Lite
Rear Door	Overslung Hinge, Door in Door, Air Release & Safety Chain
Bumper	Aluminum, Offset, Push with Under Ride



TITAN 48' 2 Axle THINWALL® Possum Belly Trailer



TAILOR YOUR TITAN

to suit your personal preference and application



Top Hinged Overslung
Door with Inner Air Flow



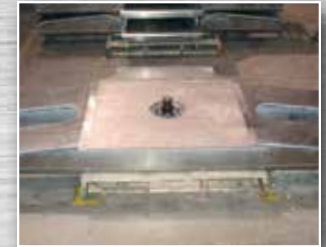
Disc Brakes



Air Release
Latches for Tailgate



Aluminum Push Bumper
with Aluminum Inserts
with Tow Shackles



Aluminum Coupler



Eclipse Front
with Man Door



Spring Bar
Top Cross Member



Sheet Channel floor



Super Singles



Tarp Bar Extrusion
Full Length, Both Sides

KEY FEATURES

- The patented THINWALL® panel features a horizontal tongue-in-groove joint that allows 100% machine welding inside & outside for end-to-end strength
- 100% welded, all aluminum, rivet free, unibody construction provides an industry leading strength to weight ratio

HEAD OFFICE

1129 Hwy #3, R.R. #3 • Delhi, Ontario, Canada N4B 2W6
Tel: 519-688-4826 Fax: 519-688-6453 • e-mail: info@titantrailers.com

Strength Through Innovation  www.titantrailers.com

