



# TITAN 6 Axle Self-Steer, Steers Ahead with Invisible Lift Walking Floor (S.P.I.F.#7+1)



## Specifications

### Payload

Waste Management  
(waste, recyclables)

## Dimensions

Length	53' (14.6m)
Width	102" (2.59m)
Overall Height	162" (4.1m)
Volume	3,905 ft <sup>3</sup> (144.6 yd <sup>3</sup> )
Weight	14,006 kg (30,877.9 lbs)

## Running Gear

Axles/Suspensions	<b>Primary/Lifts:</b> SAF CBX 25/30 <b>Steers:</b> Titan ParaMAX 25,000 lbs
ABS	6S4M
Brake Type	Drum
Tires	Goodyear & Continental
Landing Gear	Holland Mark 5



## Body

Side Panels	Aluminum Patented THINWALL® Horizontal Hollow-Core Extruded Panels
Flooring	Keith® Walking Floor® Unit
Mud flaps	Black Rubber with Titan Logo
Lights	LED - Truck Lite
Rear Door	Side Swing Door in Door, Air Operated
Bumper	Aluminum Pusher with Steer Inserts, C/W Tow Shackles



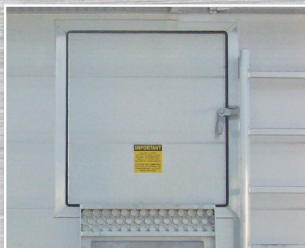


# TITAN 6 Axle Self-Steer, Steers Ahead with Invisible Lift Walking Floor (S.P.I.F.#7+1)



## TAILOR YOUR TITAN

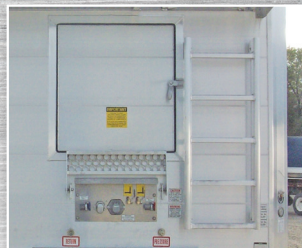
to suit your personal preference and application



Front Access Door



24" Catwalk



Front Roadside Ladder



All Aluminum Chassis



Top Cross Tubes



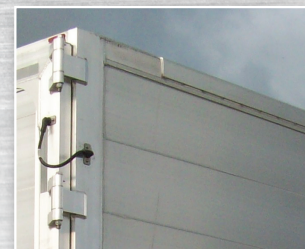
Rear Access Ladder  
Centre of Rear Door



Tow Shackles



Flip Down Step



Top Rail Overlay



Triple Ridge 18 Slat Floor  
with 2' Wear Strips at Rear

## KEY FEATURES

- The patented THINWALL® panel features a horizontal tongue-in-groove joint that allows 100% machine welding inside AND outside for end-to-end strength.
- KEITH® WALKING FLOOR® • Steel coupler assembly with bolt in kingpin
- Aluminum frame/floor assembly • Offset top rail • 2 top cross tubes

## HEAD OFFICE

1129 Hwy #3, R.R. #3, Delhi, Ontario, Canada N4B 2W6  
Tel: 519-688-4826 • Fax: 519-688-6453 • e-mail: [info@titantrailers.com](mailto:info@titantrailers.com)

Strength Through Innovation  [www.titantrailers.com](http://www.titantrailers.com)

