



TITAN 48' 2 Axle THINWALL® Tipper



Specifications

Payload

Waste Management
(waste, recyclables)

Dimensions

Length	48' (14.6m)
Width	102" (2.59m)
Overall Height	150" (3.81m)
Volume	3,126 ft³ (115.78 yd³)
Weight	7,810 kg (17,218 lbs)

Running Gear

Axles/Suspensions	Reyco 21B FAB
ABS	2S1M Meritor WABCO
Brake Type	Drum
Tires	Michelin
Landing Gear	Jost Landing Gear Model A401G3-19



Body

Side Panels	Aluminum Patented THINWALL® Horizontal Hollow-Core Extruded Panels
Flooring	THINWALL Flooring
Mud flaps	Black Rubber - Ahead of Lead Primary, Behind Rear Axle
Lights	LED - Truck Lite
Rear Door	Inner Van Door Style, Outer Top Hinged, Air Release, Safety Chain, w/Reinforced Lock Fingers
Bumper	Centre Pull Pin Bumper



TITAN 48' 2 Axle THINWALL® Tipper



TAILOR YOUR TITAN

to suit your personal preference and application



Front Access Door with
Flip Down Step



All Aluminum Chassis



Steel Centre Pull Pin with Rubber
Bumper T-Blocks Bumper



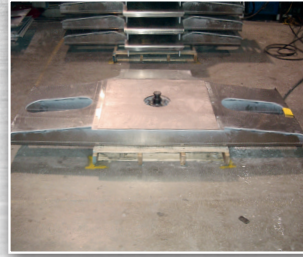
Outer Top Hinged with Inner Van
Door Style Compactor Doors



Bolt on Compactor Roof



Vents in Sidewall



Aluminum Coupler

KEY FEATURES

- The patented THINWALL® panel features a horizontal tongue-in-groove joint that allows 100% machine welding inside & outside for end-to-end strength
- 100% welded, all aluminum, rivet free, body construction provides an industry leading strength to weight ratio
- Aluminum frame/floor assembly • Tapered top rail

HEAD OFFICE

1129 Hwy #3, R.R. #3, Delhi, Ontario, Canada N4B 2W6
Tel: 519-688-4826 Fax: 519-688-6453 • e-mail: info@titantrailers.com

Strength Through Innovation  www.titantrailers.com

