



Specifications

Payload	Wood Chip Application
----------------	-----------------------

Dimensions

Length	48' (14.63 m)
Width	102" (2.59 m)
Overall Height	162" (4.1 m)
Volume	4,091 ft ³ (151.5 yd ³)
Weight (with tarp and UHMW liner)	8,020 kg (4,953 lbs)

Running Gear

Axles/Suspensions	SAF Straight Spindle
ABS	2S/1M WABCO
Brake Type	Drum
Tires	Goodyear
Landing Gear	SAF Holland

Body

Side Panels	Aluminum Patented THINWALL® Horizontal Hollow-Core Extruded Panels
Flooring	THINWALL Panels
Mud flaps	Black Rubber - Rear of Trailer
Lights	LED - Truck Lite
Rear Door	Top Hinge, Piano, HD, Solid, Paddle Lock, Manual Release
Bumper	Flush Steel Underride. Stainless Clad Rubber Tipper Blocks



TITAN 48' 3 Axle THINWALL® Possum Belly Tipper Trailer



TAILOR YOUR TITAN

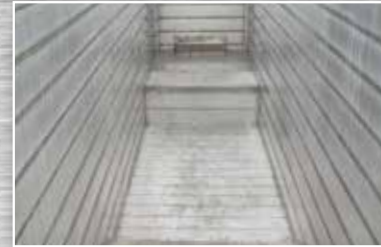
to suit your personal preference and application



24" Catwalk



Disc Brakes



Panel Floor



Clad Bumper



Back Up Lights



Spring Bar Top Cross Member



Adjustable Manual Release



Steel Coupler

KEY FEATURES

- The patented THINWALL® panel features a horizontal tongue-in-groove joint that allows 100% machine welding inside & outside for end-to-end strength
- 100% welded, all aluminum, rivet free, unibody construction provides an industry leading strength to weight ratio
- Closed body design eliminates mud/snow build-up under the trailer body

HEAD OFFICE

1129 Hwy #3, R.R. #3 • Delhi, Ontario, Canada N4B 2W6
Tel: 519-688-4826 Fax: 519-688-6453 • e-mail: info@titantrailers.com

Strength Through Innovation  www.titantrailers.com

