



## Specifications

<b>Payload</b>	Agriculture Products
----------------	----------------------

## Dimensions

<b>Length</b>	50' 15.24m
<b>Width</b>	102" (2.59m)
<b>Overall Height</b>	13' (3.96m) to Top of Arch
<b>Volume</b>	3,210 ft <sup>3</sup> (118.9 yd <sup>3</sup> )
<b>Weight</b>	9,797 kg (21,598.7 lbs)

## Running Gear

<b>Axles/Suspensions</b>	<b>Primary:</b> SAF CBX <b>Lift or Steers:</b> Titan ParaMAX 25,000lb
<b>ABS</b>	2S1M Meritor Wabco
<b>Brake Type</b>	Disc
<b>Tires</b>	Michelin
<b>Landing Gear</b>	Holland Mark 5

## Body

<b>Side Panels</b>	Aluminum Patented THINWALL® Horizontal Hollow-Core Extruded Panels
<b>Flooring</b>	Keith® Walking Floor® - Running Floor II, 2195 3/16" Pressure Seal
<b>Mud flaps</b>	Black Rubber with Titan Logo
<b>Lights</b>	LED - Truck Lite
<b>Rear Door</b>	Van, Solid, Cathedral
<b>Bumper</b>	No Bumper Due to Internal Rear Hopper



# TITAN 50' 4 Axle THINWALL® Walking Floor (S.P.I.F.#3)



## TAILOR YOUR TITAN

to suit your personal preference and application



24" Catwalk



Front Man Door



Front Ladder Driver Side



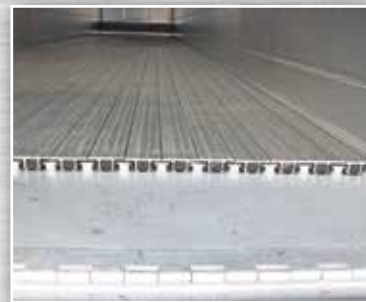
All Aluminum Chassis



Fold Down Steps



Internal Rear Hopper



Keith® Walking Floor®



Fenders Over  
Primary and Steer

### KEY FEATURES

- The patented THINWALL® panel features a horizontal tongue-in-groove joint that allows 100% machine welding inside AND outside for end-to-end strength.
- KEITH® WALKING FLOOR® • Steel coupler assembly with bolt in kingpin
- Aluminum frame/floor assembly • Tapered Top Rail • Single top cross tube

### HEAD OFFICE

1129 Hwy #3, R.R. #3, Delhi, Ontario, Canada N4B 2W6  
Tel: 519-688-4826 • Fax: 519-688-6453 • e-mail: info@titantrailers.com

Strength Through Innovation  [www.titantrailers.com](http://www.titantrailers.com)

