



Specifications

Payload	Waste Food Sludge
----------------	-------------------

Dimensions

Length	37' (11.27m)
Width	102" (2.59m)
Overall Height	159" (4.03m)
Front Height	143" (3.6m)
Volume	1675 ft ³ (62.03 yd ³)
Weight	7,790 kg (17,174 lbs)
Hoist	HYVA Cylinder, 300 Stroke, 45° Tip Angle 9-5-300

Running Gear

Axles/Suspensions	Primary: Watson Integra 30,000
Primary:	Steer: Titan ParaMAX 25,000lb
Steer:	
ABS	2S/2M WABCO
Brake Type	Disc
Tires	Goodyear
Landing Gear	Holland Mark 5 - Skid Foot - Curbside Handle

Body

Side Panels	Rolled THINWALL (Wedged Shaped) body
Mud flaps	Black Rubber - In Front and Behind Steer and at Rear/ a Head of Landing Gear
Lights	LED - Truck Lite
Tailgate	Dump Style - Hydraulically Operated Lift Tailgate - THINWALL Panel
Bumper	Aluminum with Splash Guard



TITAN 37' 3 Axle THINWALL® Tub Dump (S.P.I.F.#2)



TAILOR YOUR TITAN to suit your personal preference and application



Hydraulic Tailgate



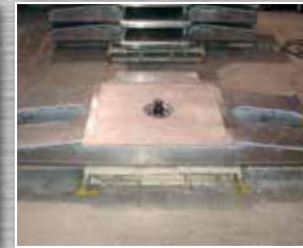
Hydraulic Operated
Door Lock



Spill Shield



All Aluminum Chassis



Aluminum Coupler
Assembly



Storage Box

KEY FEATURES

- The patented THINWALL panel features a horizontal tongue-in-groove joint that allows 100% machine welding inside & outside for end-to-end strength
- 100% welded, all aluminum, rivet free, provides an industry leading strength to weight ratio
- All air tanks drain to a central location and can be accessible without going under trailer
- Tire inflation system for primary axles
- Auto dump suspension when tailgate is opened
- Tailgate hinges have bronze bushings and do not require grease fittings
- All aluminum chassis design for maximum weight savings
- Panel sections rolled after welding to create tub profile

HEAD OFFICE

1129 Hwy #3, R.R. #3 • Delhi, Ontario, Canada N4B 2W6
Tel: 519-688-4826 Fax: 519-688-6453 • e-mail: info@titantrailers.com



Strength Through Innovation  www.titantrailers.com